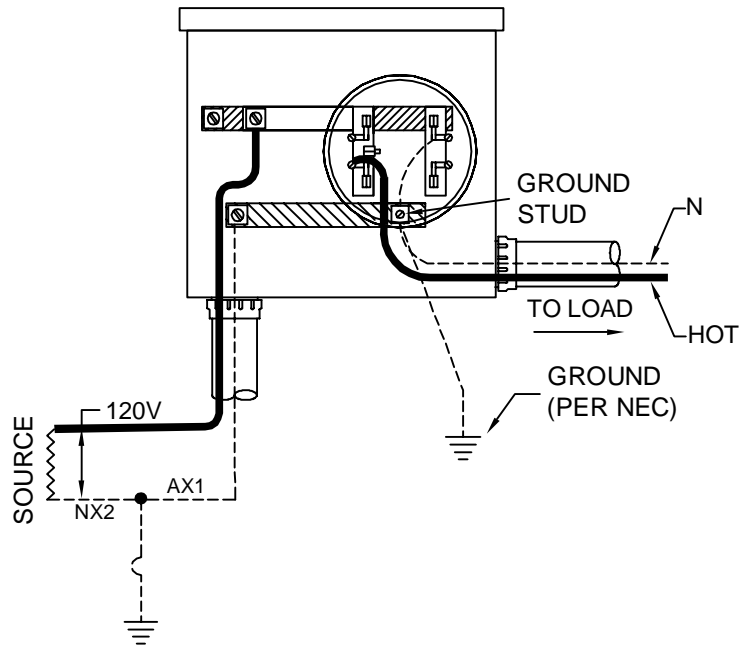


**TYPE S**  
**2 WIRE SINGLE PHASE 120 VOLTS**



**TYPE S**  
**2 WIRE SINGLE PHASE 120 VOLTS**

**FOR REFERENCE ONLY:**

**REQUIRES PRIOR WRITTEN ENGINEERING APPROVAL**

**NOTES:**

1. LOAD AND SUPPLY WIRES SHALL NOT CROSS IN THE METER SOCKET.
2. 100 AMPS ONLY.

<b>ENTERGY SERVICES, INC.</b>			
<b>WIRING DIAGRAM CONNECTIONS FOR 120V (TWO WIRE) SELF CONTAINED METERS</b>			
APPROVED BY:	JRH	DATE:	04/03/2013
CHECKED BY:	JED	SCALE:	NONE
DRAWN BY:	krich95		
		<b>No. D9-1</b>	
		PLOT	1=1 SH. 1 OF 1

1	04/13	NEW DRAWING	JED	
NO.	DATE:	REVISION	BY:	APPR:

